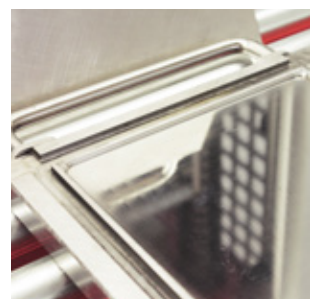
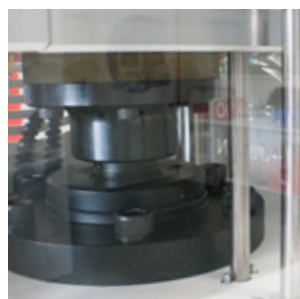
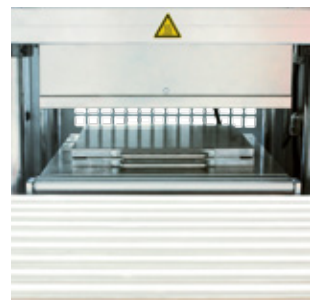
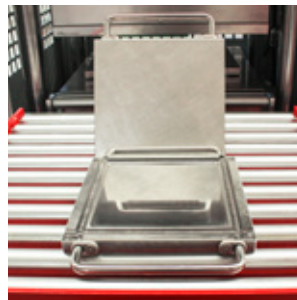
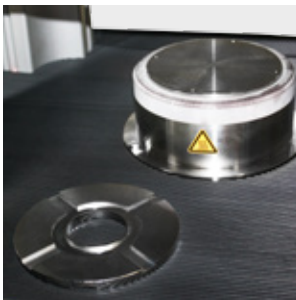
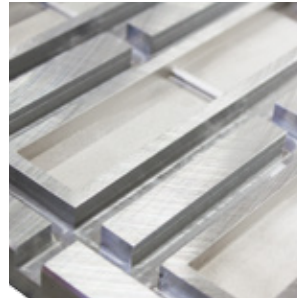
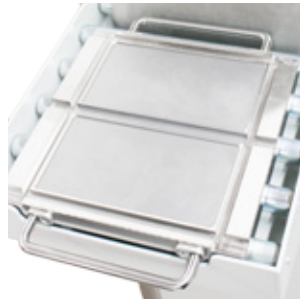
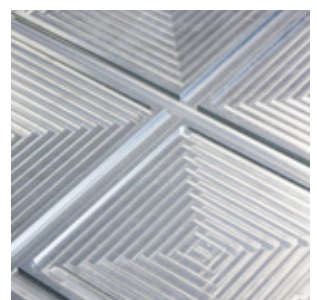


## Laboratory press



...Innovative testing solutions  
made in Germany!



# MonTech®

Werkstoffprüfmaschinen GmbH  
Carl - Benz - Straße 11  
D - 74722 Buchen / Germany

INNOVATIVE  
TESTING  
SOLUTIONS  
MADE IN  
GERMANY!

**MonTech Werkstoffprüfmaschinen GmbH is the world's leading premium manufacturer of rubber testing instruments.**

Since 1998, we have been developing, producing, distributing and servicing high quality testing machines and their components as well as related software solutions for materials and component testing.

The secrets of our success are: very high quality standards for all our products; continuous development of these products; highly qualified employees and, last but not least, proximity to our customers. Their trust in our company is reflected by long-term customer loyalty, and by being appointed "preferred supplier" by many of our OEMs.

Our company with its headquarters based in Buchen, Germany operates a worldwide sales and service network with 24/7 availability. We have an extraordinarily broad global network of branch offices and subsidiaries along with representatives and partners, who guarantee both optimal technical service on site and short delivery times.

MonTech Werkstoffprüfmaschinen GmbH has been certified according to ISO 9001:2008 and accredited in accordance with DIN EN ISO 17025:2005.

Our extensive product range spans from solutions for basic to high-end applications in various fields of quality control, as well as research and development of raw materials, polymers and rubber. Therefore, MonTech rubber testing instruments are either available in standard versions or can be built according to individual customer requests and requirements.

A state-of-the-art facility with a 98% in-house fabrication rate and a team of experienced engineers are the backbone of our capability for custom solutions.

The unique modular product design provides advantages of easy maintenance, interchangeable instrument configurations, and a high testing flexibility for all kinds of elastomeric materials. Due to MonTech's wide variety of products and their applications, we have customers in many industries, but most noticeably the automotive, tire, aerospace, rubber compounding, pharmaceutical, chemical, food, packaging, research centers, universities and institutes.



# MonTech World



## You can count on us!

We are represented in every continent and in over 53 countries, providing technical and commercial service through a network of highly-qualified local and international support staff.

## MonTech VP 3000 & LP 3000 Laboratory press series

The MonTech VP 3000 and LP 3000 are specifically designed for rubber applications and have evolved into the international standard in laboratory presses in the rubber industry.

MonTech presses stand for quality, reliability, high performance and easy operation. All presses are CE compliant and equipped with the latest drive and control technology featuring rigid 4-column press frames, electric heating, stainless steel press platens, a full color touchscreen interface, software proximity switches as well as digital PID temperature control.



**VP 3000**  
Small tabletop laboratory press

### Small laboratory press VP 3000

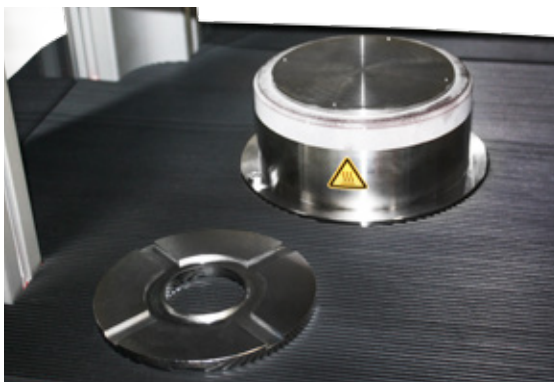
is used for fast and easy moulding, curing and preparation of rubber samples. The VP 3000 tabletop press is equipped with a 5" Color Touchscreen Display for setting Cure times, Temperatures, Degassing cycles and more, making the press with its single button control the ideal tool for small scale laboratory sample production in various shapes and thicknesses.

The VP 3000 lab press is equipped with a pneumatic closing unit, electric PID-controlled heating systems, a pneumatic safety front shield and protection covers all around the press frame.

Various standards and customer specific press moulds are optionally available.

### Online sample preparation

The MonTech VP and LP 3000 laboratory press series, along with optional sample moulds, are the ideal tools for online sample preparation in the production environment. The precise temperature control and homogenous temperature distribution ensure perfect samples for hardness, tensile, density, filler dispersion and abrasion testing.



# MonTech Laboratory press moulds

## Sample preparation and curing moulds

MonTech offers a comprehensive range of precise and durable sample curing moulds according to ISO, DIN, ASTM and GB standards in various different versions. MonTech curing moulds guarantee easy handling and accurate moulding results. The molds are available with single or multiple cavities, hardened or polished stainless steel. Every type of sample preparation for any kind of material can be covered with more than 500 different types of standard curing mould designs, over 20 different material types, and more than 20 different surface finishes and coatings. Of course moulds can also be engineered, designed and machined per individual customer requirements and specifications.

Please get in touch with us to discuss your laboratory moulding requirements!



Multi-cavity curing mould



2 mm flat sheet mould



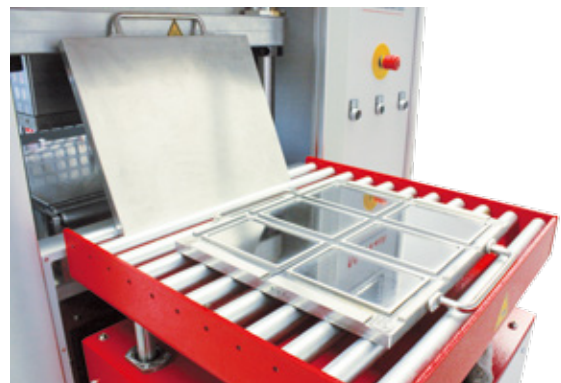
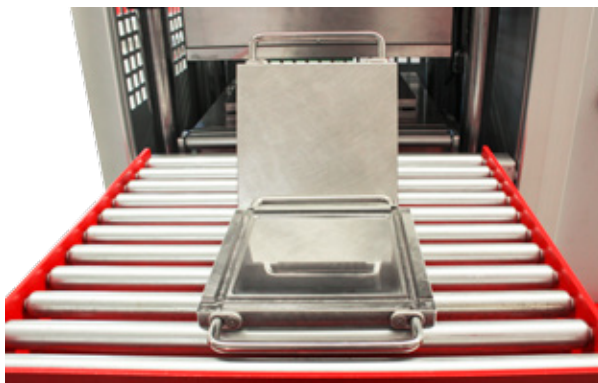
DeMattia flex-fatigue mould  
(5 cavities)

## Advanced curing mould design

Every MonTech curing mould system is a precise toolset to ensure the highest sample preparation precision and optimal results.

All MonTech mould and cover plates are exclusively made from high strength stainless steel, withstanding even highly aggressive compounds and materials. The fabrication of every mould plate includes tempering to relieve all strains from the material, coplanar grinding for highest parallelism, machining with a dimensional precision of up to 0.002 mm, polishing, final inspection and quality control.

In addition to this, moulds can optionally be fitted with sensors for force, flow and temperature distribution measurement, allowing simple sample preparation, production trials and simultaneous data acquisition for tests like cure simulation.



## Hydraulic laboratory press series LP 3000

offers high performance in rubber sample curing and preparation in accordance with ISO, ASTM, DIN, GB and other international standards.

The four-column hydraulic LP 3000 series presses are available in 4 different sizes, with platen dimensions ranging from 196 x 196 mm to 496 x 496 mm and maximum press forces of 20 to 100 tons.

All MonTech LP 3000 presses are equipped with a closed circuit, low-noise integrated hydraulic system requiring as low as 8 to 15 Liters of oil in the whole press, operating at a pressure of up to 400 Bars, making the press very durable and energy efficient at the same time.

All LP 3000 laboratory presses are equipped with electric PID controlled heating systems, pneumatic safety front shield, and 5" Color Touchscreen Display for setting Cure times, Temperatures, Degassing / lifting cycles, closing speeds and switchover points, making these presses simple to use, reliable and rugged at the same time.

LP 3000 presses can be equipped with an integrated data acquisition system with up to 12 additional temperature channels and the MonPress Computer Software, allowing users to record full press cycles including press times, forces, control temperatures, mould temperatures, degassing and more for mould-flow and cure simulation purposes.

### Key features of the LP 3000 laboratory press series:

- Enclosed 4-column press frame for high rigidity
- Stainless steel press platens and tension bars
- Electric heating with superior temperature distribution and digital PID temperature control
- Pneumatic front shield
- 2-Hand safety control with anti-tiedown
- Integrated 5" color touchscreen press control
- High efficiency low-noise hydraulics



**LP 3000 - 200kN**  
Medium size benchtop hydraulic laboratory press



**LP 3000 - 400kN**  
Floorstanding hydraulic laboratory press with single daylight



**LP 3000 - 600kN**  
Hydraulic laboratory press  
Here shown with optional second daylight with a total of 4 heated plates.



**LP 3000 - 600kN**  
Hydraulic laboratory press  
Here shown with optional second daylight with a total of 4 heated plates and height-adjustable press table.

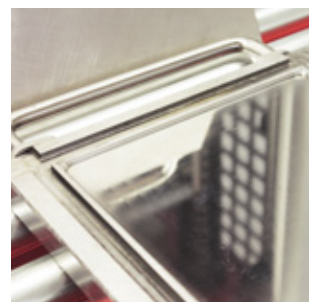
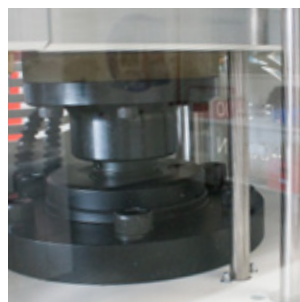
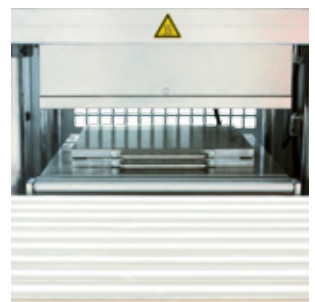
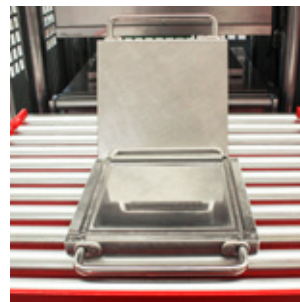
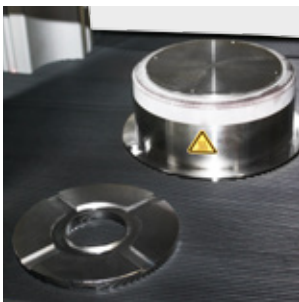
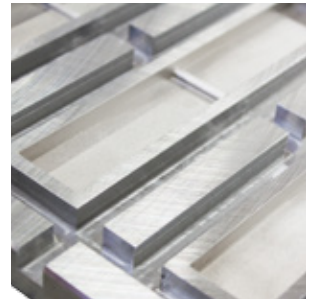
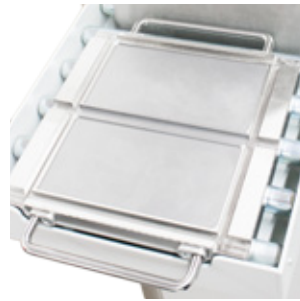
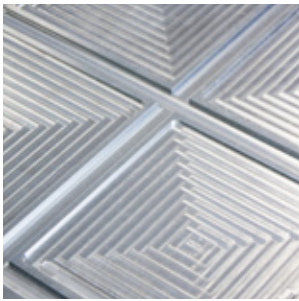
Lab Press Series / Model type	VP 3000	LP 3000 - 200kN	LP 3000 - 400kN	LP 3000 - 600kN	LP 3000 - 1000kN
Type	Pneumatic	Hydraulic	Hydraulic	Hydraulic	Hydraulic
Closing Force      kN	40	200	400	600	1000
Press platen size      mm	ø 180	196 x 196	296 x 296	446 x 446	496 x 496
Cylinder stroke      mm	100	100	300	200	200
Specific platen pressure N/mm <sup>2</sup>	1.05	5.21	4.57	3.02	4.07
Heating type	electrical	electrical	electrical	electrical	electrical
Capacity per platen      kW	1.6	2.8	4.0	6.0	8.0
Max. temperature      °C	200	250	250	250	250
Temp accuracy      °C	+/- 1.0	+/- 1.0	+/- 1.0	+/- 1.0	+/- 1.0

#### Options & accessories

2-Hand safety control	X	X	X	X	X
Pneumatic front shield	X	X	X	X	X
Temperature accuracy +/- 0.5°C	0	0	0	0	0
PLC Control with 5" color Touchscreen	X	X	X	X	X
Data acquisition system with 4, 8 or 12 additional PT 100 temperature channels and MonPress software	-	0	0	0	0
Loadcell for force feedback	-	0	0	0	0
Enlarged ram strokes	-	0	0	0	0
Second daylight - totally 4 heated plates	-	-	0	0	0
Rugged press table (fixed) mounted at the frontside of the press	-	0	0	0	0
Mould cart (movable) / Mould rack	-	-	0 / 0	0 / 0	0 / 0
Dimensions (HxWxD)      mm	930 x 560 x 480	970 x 790 x 550	1695 x 800 x 590	1750 x 1250 x 800	1950 x 1450 x 800
Weight	105 kg	450 kg	800 kg	1.100 kg	1.400 kg

- = not available    X = Standard    0 = Option

## Laboratory press



**MonTech**

Werkstoffprüfmaschinen GmbH

Carl - Benz - Straße 11

D - 74722 Buchen / Germany

Phone: +49 (0)6281 562230

Fax: +49 (0)6281 562255

[info@rubber-testing.com](mailto:info@rubber-testing.com)

[www.rubber-testing.com](http://www.rubber-testing.com)

