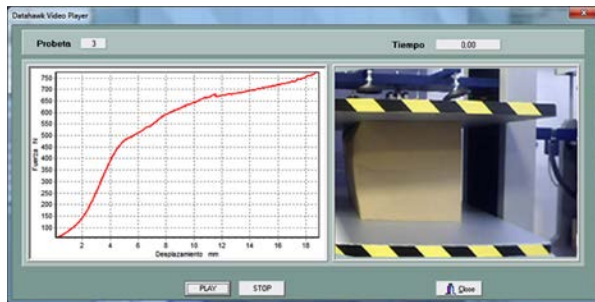


## VAL™ series COMPRESSION TESTERS

To perform compression and resistance tests to packaging according to International Standard specifications.

Applicable standards: UNE EN 137001 - ISO 12048 - DIN EN 22872 - TAPPI T804 - FEFCO 50 - AFNOR H 13-001 - JIS & ISTA...

- ❑ Force capacity: According to the model ordered (from 30 to 300 kN)
- ❑ Platen size: According to the model ordered
- ❑ Stroke: According to the model ordered
- ❑ 3 Load cells for highly accurate testing
- ❑ Top fixed parallel plate (TAPPI)
- ❑ Oscillating Platen System (according to ISO)
- ❑ Strength reading in N, Kg or Lb
- ❑ Automatic platen return after each test for easy loading of next specimen
- ❑ RS-232 interface
- ❑ Compatible with LYNX Plus and Pro where you can integrate all of your test equipment and data management into one system
- ❑ VIDEO CAPTURE Testing System included



Optional accessory : Inclination record (by Inclinator)



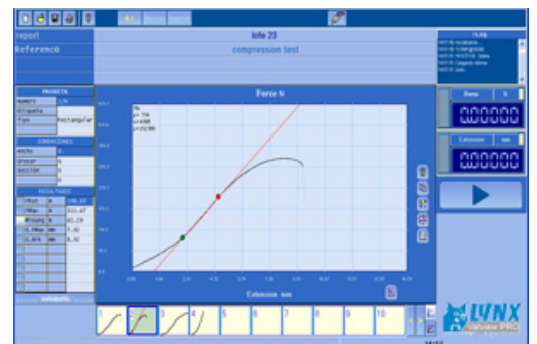
### INCLUDED:

**LYNX™ Software for Packing & Packaging Compression Test**  
 + **LYNX Management Module with basic statistics, with control** from PC  
 in **closed loop** using our software test pack with 3 test modules:

- **BCT Test Module** (standard test)
- **Constant Load** (Stacking test)
- **Cyclic Test Module** (Dynamic strain according to Strength and Stroke.)



- Dynamic Testing
- Static Testing
- Custom Fields
- Variable Test Rate
- Company Logos
- Closed Loop Control
- Spanish/English/German/French
- All-in-One PC Touch Screen 22" included



- Force range** According to the model ordered (from 30 to 300 kN)
- Load Measuring System** 3 precision load cells (prevents side loading errors) .03 % FS accuracy
- Drive System** DC variable speed drive system
- Displayed System Resolution**
  - Load: Resolution according to models (see below)
  - Platen Displacement: 0.001 mm (0.000040 in.)
  - Platen Speed: 0,1 mm/min. (0.0040 in./min.)
- Platen Flatness** Flat within 0.25 mm (0.01 in.)
- Parallelism of Platens** Parallel within ± 1 mm (± 0.04 in.)
- Safety Features**
  - E-Stop
  - Over-Load Protection in software
  - Upper and lower limit switches
  - Load sensor with automatic retreat
  - Communications failure detection integrated with automatic stop
- Variable Platen Test Speed** 1 – 250 mm/min (0.04 – 9,84 in./min.)
- Platen Retract Speed** 250 mm/min. (9,84 in./min.)
- Guidance of the platen** By means of low friction column-guided linear bearings.
- The equipment** Is mounted with silence dampening and anti-vibration blocks.
- Output interface** RS-232

**STRENGTH MEASURE**

- Select units : Newtons, Kg & Pounds

**EXTENSION MEASURE (DEFORMATION)**

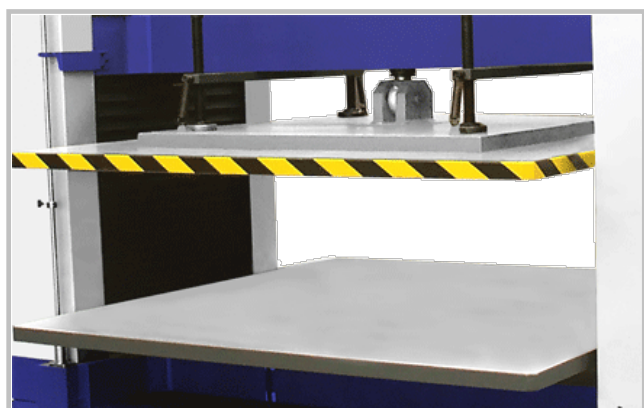
- Select units: millimetres & inches

MODELS	RANGE KN	RESOLUTION N g	PLATES mm	STROKE mm	DIMENSIONS W x D x H / mm	POWER Kw
VAL 30	30	0,30 / 30	1250 x 1250	1250	1850 x 1250 x 2700	1,5
VAL 50	50	0,5 / 50	1250 x 1250	1250	1850 x 1250 x 2700	2
VAL 100	100	1 / 100	1550 x 1550	1550	2150 x 1550 x 3000	2,5
VAL 150	150	1,5 / 150	1550 x 1550	1850	2150 x 1550 x 3300	3,5
VAL 300	300	20 / 2000	1850 x 1850	2150	2500 x 1850 x 3800	7

**POWER SUPPLY:** 110V/60Hz or 220V/50Hz single phase  
 220V/60Hz or 380V/50Hz Three-phase (in models with capacity > 100 KN)

**With OSCILLATING & FIXED PLATE SYSTEM**

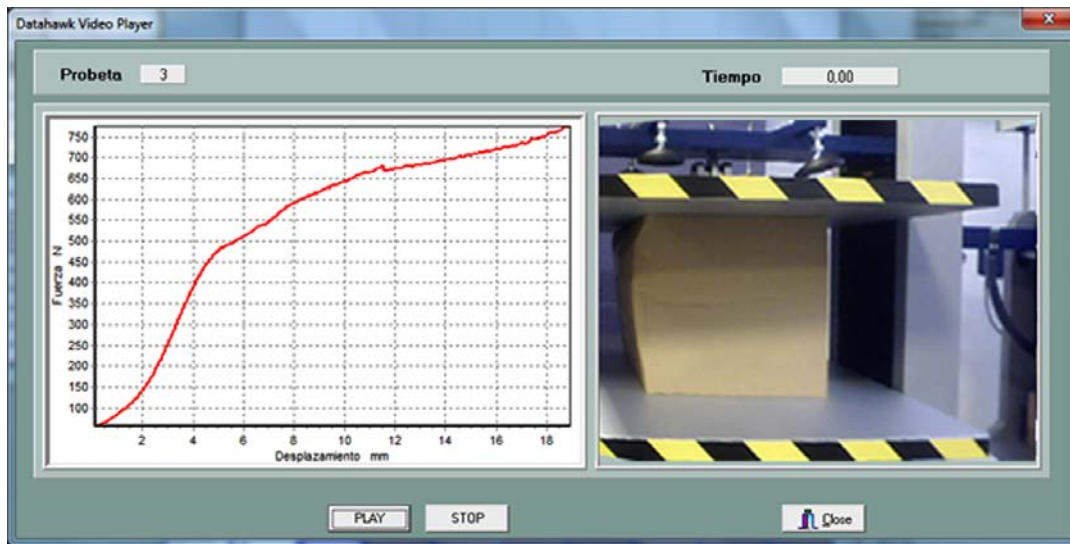
For Compresión Tests according to  
 TAPPI - ISO & FEFCO standards



THE STANDARD DELIVERY INCLUDES:

- ❑ **VIDEO-CAPTURE Testing System (hardware + software)**

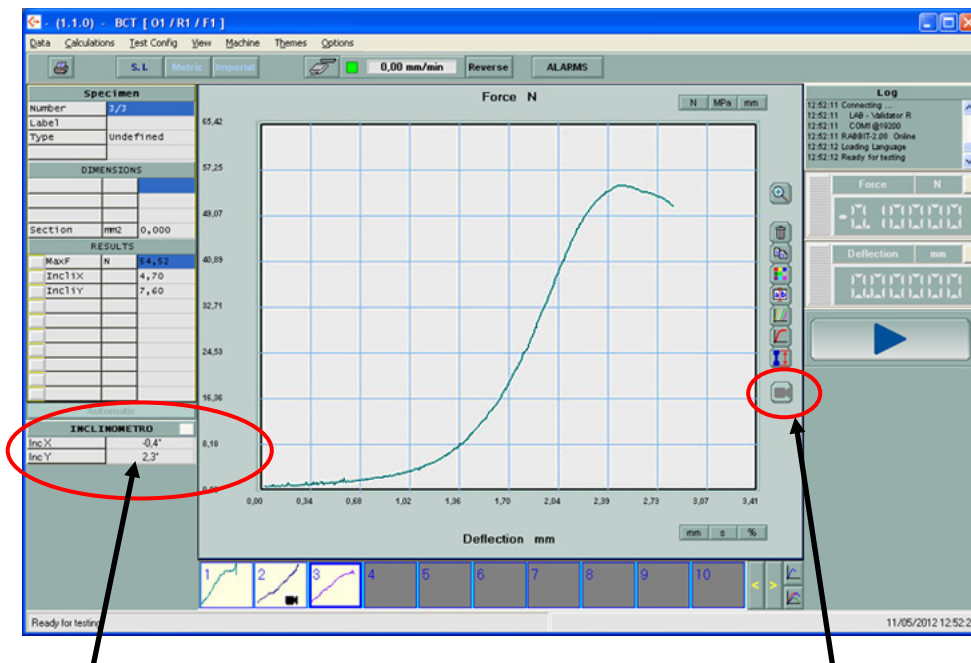
Allows the video recording during a compression test through a webcam, the video being linked to the test



OPTIONAL ACCESSORY :

- Electronic Inclinator** (\*\* This accessory can only be installed with the Oscillating Plate System)

Allows the registration of tilt angle on the axis "X" and "Y" during the test



Record of the inclination in the X and Y axes

Activation button Graph Viewer and Video synchronized

DELIVERY CONTENT:

- ✓ VAL series Compression Tester ordered + Packing & Packaging Compression Test Software
- ✓ LYNX™ (included 3 test Modules BCT, CONSTANT LOAD, and CYCLIC Tests)
- ✓ LYNX™ MANAGEMENT MODULE with Basic Statistics
- ✓ Video Capture Testing System (Hardware + Software)
- ✓ All-in-One PC Touch Screen PC 22" - Windows 10 Home Operative System

\* TECHLAB SYSTEMS reserves the right to do any technical modification without advance notice

\* Windows is a Trade mark of Microsoft Corporation





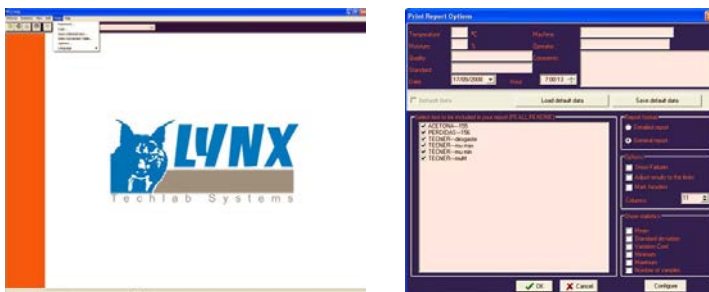
## LYNX Test Program for PACKAGING and PACKING COMPRESSION

*“Data in Real Time...”*



COMPRESSION TESTS modes

- ✓ BCT Module
- ✓ CONSTANT LOAD Module
- ✓ CYCLIC Module

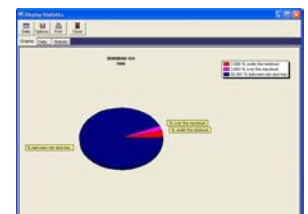
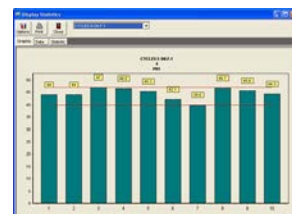
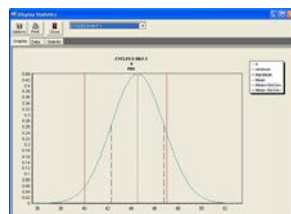
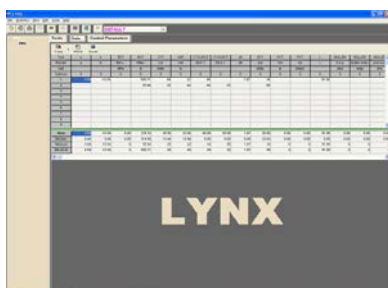


- Enhances quickness in carrying out tests and in obtaining results.
- Reduces human error.
- Traceability according to ISO 9000
- The software records minimum, maximum, and median value as well as standard deviation
- Up to 100 tests of measurement capacity for each report
- SAVE, PRINT and COPY to Office Clipboard functions

When combining this test software with your compression system, it is possible to perform box crush tests, constant load compression, and cyclic compression tests. Machine operation is managed via the software, and all data is captured with the software. The data is displayed in real time on your monitor, and then saved and can be retrieved easily in the future.

**INCLUDED: LYNX MANAGEMENT MODULE with Basic Statistics**

The LYNX Management Module allows you to manage the data generated, choose the interface language, and prepare and print reports (that you can customize with your logo). You can also change the units displayed, as well as change user accounts and passwords. You can also record the minimum, maximum and optimal values to manage data with statistics, charts bars, GAUSSEN Bell, tolerances comparatives and export this data to Word, Excel, PDF and more.



\* TECHLAB SYSTEMS reserves the right to do any technical modification without advance notice