

INTERNAL BOND TESTER MH-10D model

This equipment has wide application in quality control testing of paper and paper products.
It measures the bond strength of paper and paperboard, coated cardboard, kraft paper...

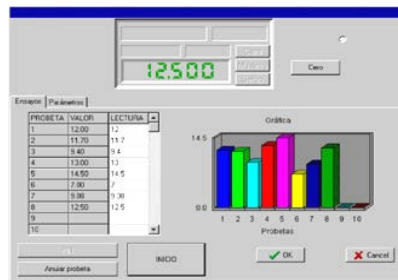
According to standard: TAPPI T569



- Digital reading
- Readings in ft.lb - Kg.cm - Kg.cm / m² - J - J / m² (other units specify when ordering)
- Statistic functions (last and medium values test)
- Zero calibration protocol
- USB Output
- Strong frame in steel designed in order to avoid energy loss caused by vibrations during the test
- Compatible with **LYNX** Integral Management System

OPTION: **LYNX** Software Systems

Through a PC and **LYNX** Software + **Bond Test Module**, it is possible capture quickly and reliability the results of the tests. Later it is possible to make statistical calculations



GENERAL INFORMATION

This equipment has a wide application in quality control for paper and derived. It allows to measure the strength of bond strength of materials made layer materials, papers, cardboard, coated cardboards kraft paper, etc.

TEST DESCRIPTION

The measure of the sample must be of **1 inch square**. The sample is adhered between the base block and the aluminium angle, by two pieces of double coated adhesive tape. This sample block is clamped to the base of the equipment. The equipment is lifted and once it is released, it swings down hitting the aluminium angle. To change the strength of the pendulum just add or remove the weights.

The sample breaks internally, separating its components. A 3.600 points/turn optical encoder transmits the internal bond strength of the sample, indicating in the programmable Digital Display the maximum swing point of the pendulum in **ft.lbs**.

In order to minimize variations in tests, this equipment has a device, which allows to prepare 5 samples at the same time. The preparation of the samples must be carefully done to obtain representative results.

The preparation and conditioning of samples is done on a device placed on the equipment base. A double-coated adhesive tape is used like a joint between the sample, the metal block and the aluminium angle. Once the samples have been placed, they are pressed uniformly by the action of a lever.

TECHNICAL DATA

- ✓ Security screen
- ✓ Ball-striking head
- ✓ Measurement scale: 0 a 500 ft.lb
- ✓ 3 sets of washers to adjust the adherence pressure of the samples
- ✓ 5 metal blocks and 5 aluminium angles
- ✓ 1 Tape-support, 5 double coated adhesive tape rolls
- ✓ 1 Manual cutter
- ✓ Air level

CONNECTIONS:

Electrical: 230 V 50 Hz or 110 V 60 Hz (single-phase)

DIMENSIONS AND WEIGHT:

Dimensions: 700 x 450 x 620 mm (M x D x H)

Box for transport: 840 x 650 x 840 mm (M x D x H)

Weight Net/Gross: 60 Kg / 105 Kg

DELIVERY CONTENT:

- > Internal Bond Tester
- > 5 Sample Angles of 25,4 x 25,4 mm (1 x 1 inches)
- > 5 Rolls double sided tape
- > 1 Cutter for sample preparations

* TECHLAB SYSTEMS reserves the right to do any technique modification without advance notice

Doc. : MH10D-1-CAT-I-R2