

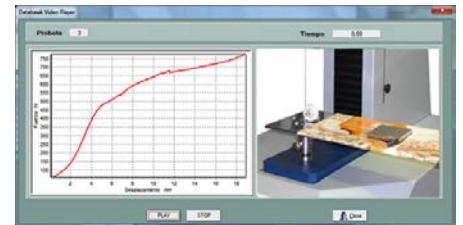
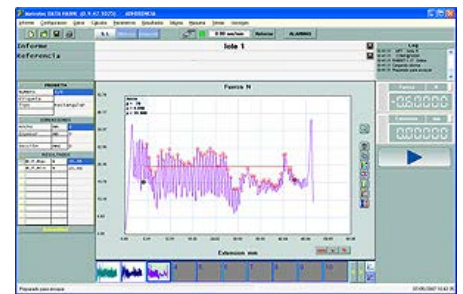
## FRICITION TESTER FT-10 model

For fast and accurate determination of Static and Dynamic Friction coefficient of paper, cardboard, plastic films...

Applicable : ASTM D1894 (method B) - TAPPI T816, T549



*"Data in Real Time ..."*



**Video Capture Testing Area Included**



*(with laptop PC of 15")*

**15" Laptop PC + LYNX Testing Software + LYNX MANAGEMENT MODULE with Basic Statistics**

### DESCRIPTION

This tester instrument has been manufactured according to the ASTM 1894-B - TAPPI T549 & T816 standard, to determine the **"Static and Dynamic" Friction Coefficient** on Paper, cardboard or films. According to Standards, the equipment is based on a mobile sled, pulled by a Dynamometric system of high accuracy.

Due to the high precision and reproducibility of the test results, this equipment is also used for R+D (Research and development) to analyse the frictional properties of surfaces of the materials above mentioned or similar materials, under strictly controlled testing conditions.

- ❑ **15" laptop PC** interface for Data Acquisition and Control
- ❑ **LYNX testing software** and friction test module
- ❑ Statistics: Min, Max, Average, Standard Deviation, Gauss Bells, Tolerances and Bars
- ❑ Save – Print – Copy to Office Clipboard...
- ❑ Languages: English – Spanish – German & French
- ❑ Dynamic and Static friction coefficient automatic determination
- ❑ Robust and highly accurate
- ❑ Easy to operate
- ❑ **10N Load cell**
- ❑ USB interface f/connection to a PC
- ❑ Performing tensile tests is possible (grips optional)
- ❑ Improve Your Quality System to ISO 9000
- ❑ Eliminates Human Error
- ❑ Compatible with the Integral Testing Management Systems **LYNX Plus & Pro**

**TECHNICAL FEATURES**

- Sled dimensions (to be chosen):
  - a) According to ASTM D1894 - Method B: Sled sizes:63,5 x 63,5mm ; sled weight: 200 g
  - b) According to TAPPI T816: Sled sizes: 63,5 x 63,5 mm.; sled weight: 1.360 g
- The sled moves at a constant speed of 150 +/- 1mm/min, (other speeds can be programmed as well, e.g. standard - AFNOR NFQ 03-082 - 175 +/- 25 mm/min), with a total run of 150mm (adjustable) and automated Stop limit.
- With Test Speed in mm/min and displacement (resolution: 0,1 mm)
- Adjustable test speed; range between 1 - 400 mm/min
- The force required to start and maintain the sliding movement, is measured by a precision load cell force of 10 N maximum capacity; precision +/- 0,0001 N (Electronic capturing resolution 0,0001 N) - with USB interface and communication cable
- Aluminium sample support with device for height adjustment. Sizes: 150 x 300 mm

**SOFTWARE:**

This tester instrument is provided with software for friction tests and automatic calculations of the Static and Dynamic coefficients, with curves and numerical test results.

<p><b>CONNECTIONS:</b> Electrical: 110V/60Hz or 230V/50Hz Single-phase</p> <p><b>DIMENSIONS AND WEIGHT:</b> Dimensions: 420 x 670 x 950 mm (W x D x H) Box for transport: 550 x 870 x 1250 mm (W x D x H) Weight Net/Gross: 64 Kg / 110 Kg</p>	<p><b>DELIVERY CONTENT:</b> &gt; Friction Tester FT-10 model &gt; 15" Laptop PC with Windows 10 Home O.S. &gt; Friction sled to be chosen: ASTM or TAPPI &gt; UNIVERSAL <b>LYNX</b> Testing Software &gt; <b>LYNX</b> Management Module with Basic Statistics</p> <p style="text-align: center;">* The standard supply does not include the grips and other test devices</p>
--	--



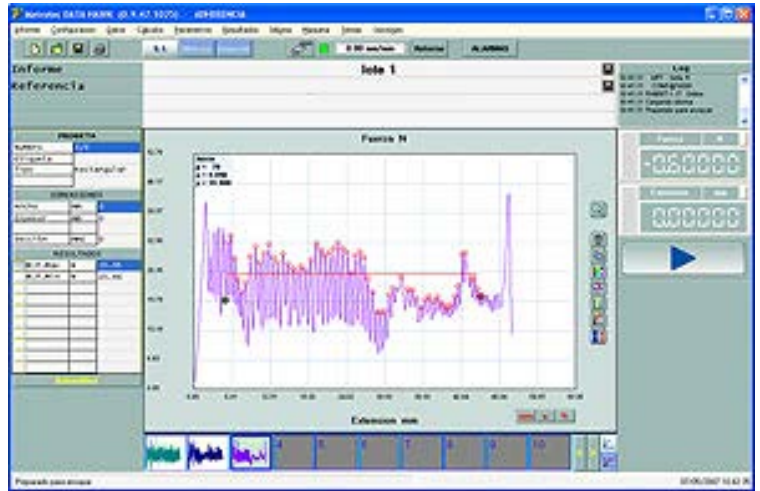
\* TECHLAB SYSTEMS reserves the right to do any technical modification without advance notice



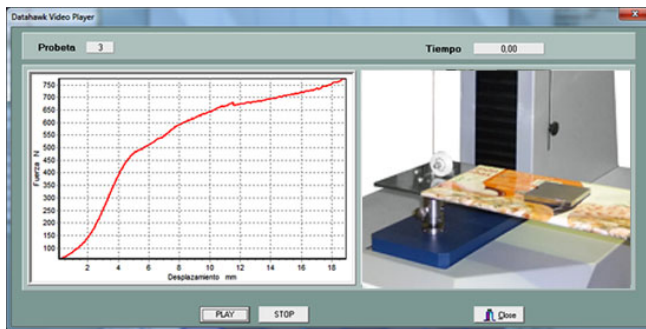
Software **LYNX** Universal Tests  
TENSILE – COMPRESSION – BENDING – FRICTION and TEAR

*“Data in Real Time...”*

- ❑ Quickness carrying out tests and obtaining results
- ❑ No human mistakes
- ❑ Traceability according to ISO 9000



- It marks Maximum-Minimum-Medium Values and Standard Deflection
- Up to 100 tests storing capacity for each report
- SAVE-PRINT-OFFICE CLIPBOARD FUNCTIONS – Reports in PDF format



THE STANDARD DELIVERY INCLUDES:

- ✚ VIDEO-CAPTURE Testing System  
(hardware + software)

Allows the video recording during a Tensile, Compression, Flexion... test through a webcam, the video being linked to the test

**INCLUDED: LYNX MANAGEMENT MODULE with Basic Statistics**

The LYNX Management Module allows you to manage the data generated, choose the interface language, prepare and print reports that you can customize with your logo, change the testing units, different user password levels, introduce the minimum, maximum and optimal values to manage data with statistics, charts bars, GAUSSEN Bell, tolerances comparatives, export data to Word - Excel ..., PDF generation and more.

\* TECHLAB SYSTEMS reserves the right to do any technical modification without advance notice