

# Scientific

## Extrusion Blow Moulding Machine Attachment Type LBM-125



**Fully automatic hydraulic Laboratory Blow Moulding attachment with LCD touch screen controls**

**For producing hollow objects in LD-PE, HD-PE, PP, PC, PS and PVC**

**Completely enclosed for optimum safety in full conformity to all word safety standards**

**Offers an economic solution for an easy to use blow moulding attachment which can be attached to any of our Laboratory Single or Twin screw extruders**

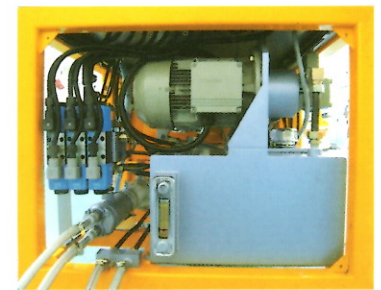
## *Labtech Engineering*

**Bangpoo Industrial Estate, 818 Moo 4, Soi 14B, Sukhumvit Road, Praksa, Muang, Samutprakarn 10280, Thailand Tel.: 66-2-709,6959, Fax: 66-2-710 6488 and 89, E-mail: labtech@ksc.th.com Website: www.labtechengineering.com**

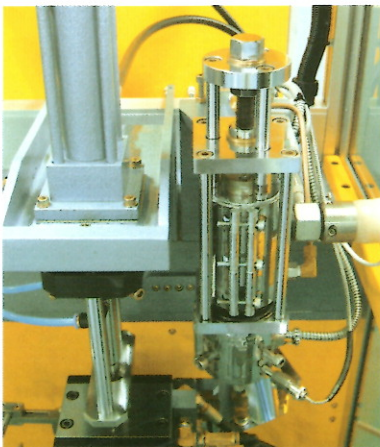
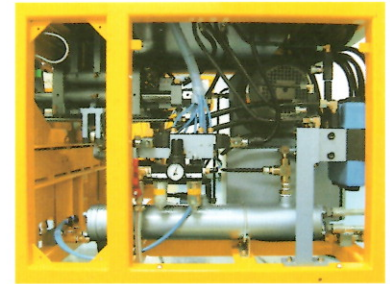


Control panel with easy to use LCD colour touch screen and manual controls.

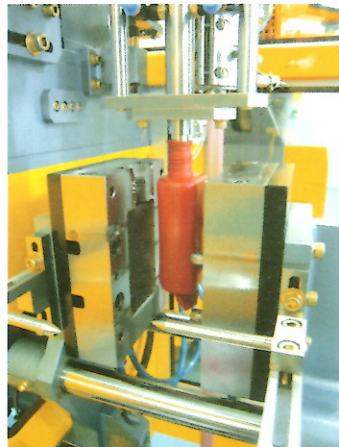
Large swing open double safety interlocked door for easy access to all inner blow moulding components. All electric supply to the attachment will cut off when door is opened.



Generously sized built in hydraulic components designed for trouble free continuous production.



Left part of above picture shows the piston to the parison plunger with the pneumatic bottle inflation unit. The inflation pressure is regulated with dials on the front right panel.



Above a bottle has cooled down and the mould is opening



The bottle is held by discharge pins and when the mould is opening, it will drop into the discharge chute and exit out through the lower left side of the sub cabinet.

The die shown to the right in above picture has the parison adjustment bolt on the top to set the thickness of the bottle. The three screws on the lower part of the die are used to adjust the centering of the die lip. The extruder inlet is located on the right side of the die and the extruder is here connected with a heated and insulated pipe and a C-Clamp flange for easy and fast installation.

## Also available for 2 layers and soon 3 layers Co-Extrusion Blow Moulding

<b>Max. Bottle size</b>	<b>125 ml</b>
<b>Max. Mould dimension (WxH)</b>	<b>130x180 mm</b>
<b>Min. Mould thickness</b>	<b>2x45 mm</b>
<b>Mould clamping stroke</b>	<b>100 mm</b>
<b>Mould clamping force</b>	<b>5 kN</b>
<b>Air pressure requirement</b>	<b>4-6 bar</b>
<b>Motor for hydraulic pump</b>	<b>2.2 kW</b>
<b>Electrical consumption</b>	<b>4.0 kW</b>
<b>Machine dimension mm (WxLxH)</b>	<b>1300x1320x1650</b>
<b>Weight</b>	<b>650 kg</b>