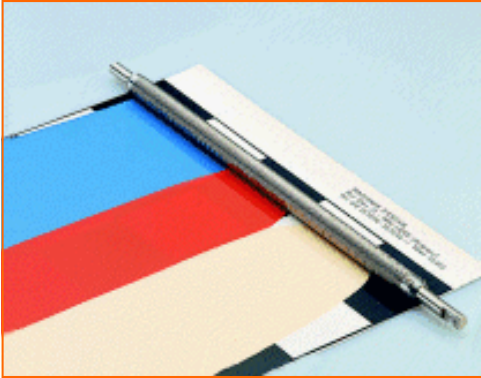


## Elcometer 4360 & 4361 Spiral Bar Coaters



Elcometer 4360 & 4361 Spiral Bar Coaters

### At a glance

- *Wide range of thicknesses available*
- *Two widths to choose from*
- *Can be used with the Elcometer motorised film applicators*

### Elcometer 4360 & 4361 Spiral Bar Coaters

Made of stainless steel, and consisting of a cylindrical bar wound with stainless steel wire these spiral bar coaters are used to spread one or more products, with a high levelling ability, on a wide variety of substrates, even flexible ones.

- A wide range of gaps available providing a wide range of coating thicknesses: from 4 to 500 µm.
- 2 film widths: 140mm (5.5") or 250mm (9.8"); other widths on request.

Ideal for use with the Elcometer 4330 or 4340 Motorised film applicators.

A special table, fitted with a clamp and a flexible mat for optimal manual application, is also available.

### Film Application & Test Charts

For numerous products such as paint, ink, varnishes, glue and cosmetics, the reliability of many laboratory tests is directly related to the quality of the samples prepared from it.

It is absolutely essential that any measurements made on such coatings, whether for the purpose of describing their appearance or their physical properties (colour, gloss, hiding power, drying time, etc), are made on the basis of uniform and comparable samples with precisely controlled thickness.

In order to meet such specific demands, Elcometer has a wide range of high quality, high precision film applicators and motorised film applicators for greater repeatability and reproducibility when undertaking a large number of sample tests.

Elcometer also offer a wide range of Leneta Test Charts – the market standard – to meet all your specific requirements

BAR WIDTH 140mm (5.5")			
Model	Coating Thickness		Part Number
	µm	mils/thou	
Elcometer 4361/1	4	0.157	K0004361P001
Elcometer 4361/2	6	0.236	K0004361P002
Elcometer 4361/3	8	0.315	K0004361P003
Elcometer 4361/4	10	0.393	K0004361P004
Elcometer 4361/5	12	0.472	K0004361P005
Elcometer 4361/6	16	0.630	K0004361P006
Elcometer 4361/7	20	0.787	K0004361P007
Elcometer 4361/8	26	1.024	K0004361P008
Elcometer 4361/9	30	1.181	K0004361P009
Elcometer 4361/10	34	1.338	K0004361P010
Elcometer 4361/11	38	1.496	K0004361P011
Elcometer 4361/12	40	1.574	K0004361P012
Elcometer 4361/13	46	1.811	K0004361P013
Elcometer 4361/14	50	1.968	K0004361P014
Elcometer 4361/15	56	2.205	K0004361P015
Elcometer 4361/16	60	2.362	K0004361P016
Elcometer 4361/17	66	2.598	K0004361P017
Elcometer 4361/18	70	2.755	K0004361P018
Elcometer 4361/19	76	2.992	K0004361P019
Elcometer 4361/20	80	3.149	K0004361P020
Elcometer 4361/21	90	3.543	K0004361P021
Elcometer 4361/22	100	3.937	K0004361P022
Elcometer 4361/23	110	4.330	K0004361P023
Elcometer 4361/24	120	4.724	K0004361P024
Elcometer 4361/25	130	5.118	K0004361P025
Elcometer 4361/26	140	5.511	K0004361P026
Elcometer 4361/27	150	5.905	K0004361P027
Elcometer 4361/29	175	6.890	K0004361P029
Elcometer 4361/30	200	7.874	K0004361P030
Elcometer 4361/31	300	11.811	K0004361P031
Elcometer 4361/32	400	15.748	K0004361P032
Elcometer 4361/33	500	19.685	K0004361P033

BAR WIDTH 250mm (9.8")			
Model	Coating Thickness		Part Number
	µm	mils/thou	
Elcometer 4360/1	4	0.157	K0004360P001
Elcometer 4360/2	6	0.236	K0004360P002
Elcometer 4360/3	8	0.315	K0004360P003
Elcometer 4360/4	10	0.393	K0004360P004
Elcometer 4360/5	12	0.472	K0004360P005
Elcometer 4360/6	16	0.630	K0004360P006
Elcometer 4360/7	20	0.787	K0004360P007
Elcometer 4360/8	26	1.024	K0004360P008
Elcometer 4360/9	30	1.181	K0004360P009
Elcometer 4360/10	34	1.338	K0004360P010
Elcometer 4360/11	38	1.496	K0004360P011
Elcometer 4360/12	40	1.574	K0004360P012
Elcometer 4360/13	46	1.811	K0004360P013
Elcometer 4360/14	50	1.968	K0004360P014
Elcometer 4360/15	56	2.205	K0004360P015
Elcometer 4360/16	60	2.362	K0004360P016
Elcometer 4360/17	66	2.598	K0004360P017
Elcometer 4360/18	70	2.755	K0004360P018
Elcometer 4360/19	75	2.992	K0004360P019
Elcometer 4360/20	80	3.149	K0004360P020
Elcometer 4360/21	90	3.543	K0004360P021
Elcometer 4360/22	100	3.937	K0004360P022
Elcometer 4360/23	110	4.330	K0004360P023
Elcometer 4360/24	120	4.724	K0004360P024
Elcometer 4360/25	130	5.118	K0004360P025
Elcometer 4360/26	140	5.511	K0004360P026
Elcometer 4360/27	150	5.905	K0004360P027
Elcometer 4360/29	175	6.890	K0004360P029
Elcometer 4360/30	200	7.874	K0004360P030
Elcometer 4360/31	300	11.811	K0004360P031
Elcometer 4360/32	400	15.748	K0004360P032
Elcometer 4360/33	500	19.685	K0004360P033

Accessories	Description	Part Number
	Table for Bar Coater, 25 x 42cm	K0004364M001
	Table for Bar Coater, 14 x 22cm	K0004364M002

## Related products



Elcometer 4330

This simple automatic film applicator is supplied with a system for fixing spiral bar applicators, or other Elcometer film applicators. Samples are secured with a simple clamp and three buttons control the operation and direction of the applicator.



Elcometer 4340

When preparing a wide range of samples with different coatings and on various substrates, the Elcometer 4340 film applicator is the unit for you. Designed with 11 pre-set speeds, coatings can be applied with total consistency. A range of tables and adaptations can be selected. Vacuum, electromagnetic or heated tables, drying time recorders and gelatine devices are available.



Elcometer 3520

The baker film applicator is made of hardened stainless steel and has a cylindrical applicator body. Used to apply a pre-defined thickness and film width on flat, relatively firm surfaces.



Elcometer 3550

The bird applicators have a flat edged prismatic body and are manufactured out of precision ground stainless steel and are suitable for various coatings which are applied to flat and relatively strong substrates.



Leneta test charts

Elcometer supply a wide range of Leneta Test Charts, from plain white to those having different patterns of black and white. Produced from high quality, non-fluorescent paper, free of optical brighteners that may affect colour measurements, Leneta Test Charts are the market standard in today's coatings industry.

### ENGLAND

Elcometer Instruments Ltd  
Edge Lane  
Manchester M43 6BU

Tel: +44 (0) 161 371 6000  
Fax: +44 (0) 161 371 6010  
e-mail: [sales@elcometer.com](mailto:sales@elcometer.com)  
[www.elcometer.com](http://www.elcometer.com)

### USA

Elcometer Instruments Inc  
1893 Rochester Industrial Drive  
Rochester Hills Michigan 48309

Tel: +1 248 650 0500  
Toll free: 800 521 0635  
Fax: +1 248 650 0501  
e-mail: [inc@elcometer.com](mailto:inc@elcometer.com)  
[www.elcometer.com](http://www.elcometer.com)

### CANADA

Elcometer Canada Ltd  
PO Box 622, 401 Ouelette Avenue  
Windsor, Ontario N9A 6N4

Tel: +1 248 650 0500  
Toll Free: 800 521 0635  
Fax: +1 248 650 0501  
e-mail: [ca\\_info@elcometer.com](mailto:ca_info@elcometer.com)  
[www.elcometer.com](http://www.elcometer.com)

### ASIA & THE FAR EAST

Elcometer (Asia) Pte Ltd  
896 Dunearn Rd  
Sime Darby Centre #3-09  
Singapore 589472,  
Republic of Singapore

Tel: +65 6462 2822  
Fax: +65 6462 2860  
e-mail: [asia@elcometer.com](mailto:asia@elcometer.com)  
[www.elcometer.com](http://www.elcometer.com)

### BELGIUM

Elcometer SPRL  
Rue Vallée 13  
B-4681 Hermalle /s Argenteau

Tel: +32 (0)4 379 96 10  
Fax: +32 (0)4 374 06 03  
e-mail: [be\\_info@elcometer.be](mailto:be_info@elcometer.be)  
[www.elcometer.be](http://www.elcometer.be)

### FRANCE

Elcometer SARL  
BP 8-Bou  
60 Rue de la Petite Levée  
45430 Chécy

Tel: +33 (0)2 38 86 33 44  
Fax: +33 (0)2 38 91 37 66  
e-mail: [fr\\_info@elcometer.fr](mailto:fr_info@elcometer.fr)  
[www.elcometer.fr](http://www.elcometer.fr)

### GERMANY

Elcometer Instruments GmbH  
Himmlingstraße 18  
D-73434 Aalen

Tel: +49 (0) 7366 91 92 83  
Fax: +49 (0) 7366 91 92 86  
e-mail: [de\\_info@elcometer.de](mailto:de_info@elcometer.de)  
[www.elcometer.de](http://www.elcometer.de)