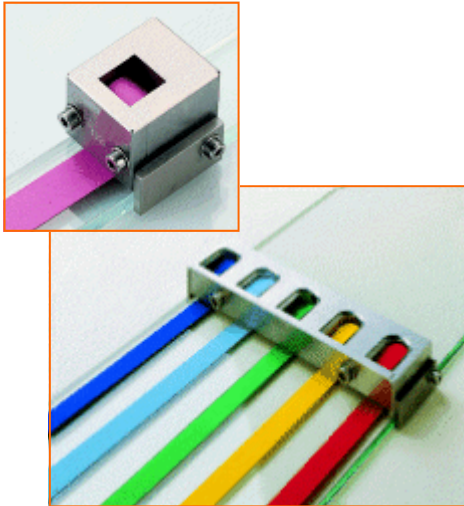


Elcometer 3505 Cube Film Applicators



Elcometer 3505 Cube Film Applicators

Elcometer 3505 Cube Film Applicators

Made of hardened stainless steel with a bevelled flat-edged blade, these applicators apply films of 12mm (0.5") wide. Generally on any flat and firm surface, and especially on glass for evaluation of drying time.

A set of five reservoirs apply 5 strips of film at the same time is also available. Ideal for simultaneously studying several different products. The film spacing matches exactly the gliders of the drying time system of the Elcometer 4341 Motorised Film Applicators.

Supplied with a set of nineteen gauges either from 30 to 1000µm or 1 to 40 mils to adjust the gap of the spreader blade.

Film Application & Test Charts

For numerous products such as paint, ink, varnishes, glue and cosmetics, the reliability of many laboratory tests is directly related to the quality of the samples prepared from it.

It is absolutely essential that any measurements made on such coatings, whether for the purpose of describing their appearance or their physical properties (colour, gloss, hiding power, drying time, etc), are made on the basis of uniform and comparable samples with precisely controlled thickness.

In order to meet such specific demands, Elcometer has a wide range of high quality, high precision film applicators and motorised film applicators for greater repeatability and reproducibility when undertaking a large number of sample tests.

Elcometer also offer a wide range of Leneta Test Charts – the market standard – to meet all your specific requirements

At a glance

- Ideal for creating multiple film strips for testing with the Elcometer Drying Time Recorders
- Supplied with thickness standards for accurate film thickness.

Model	Number of Stripes	Type	Film Gaps		Film Width		Part Number	
			µm	mils	mm	inches	Metric	Imperial
Elcometer 3505/1	1	Cube Applicator with thickness gauges	30- 1000	1 - 40	12	0.5	K0003505M001	K0US3505M001
Elcometer 3505/2	5	Cube Applicator with thickness gauges	30 - 1000	1 - 40	12	0.5	K0003505M202	K0US3505M202
Accessories	19 Thickness Gauges for Calibration						KT003600P001	KTUS3600P001
Packing List	Elcometer Film Applicator, Glass plate, Set of thickness gauges x 2, Hexagonal wrench, Storage case & Operating instructions							

Related products



Elcometer 3508

This simple to use applicator has 4 pre-set film thicknesses, one on each edge. The Elcometer 3508 is supplied with two reservoirs making it ideal for use with the Elcometer 1720 Washability Tester, the Elcometer 3560 has a single reservoir.



Elcometer 4341

When preparing a wide range of samples with different coatings and on various substrates, the Elcometer 4340 film applicator is the unit for you. Designed with 11 pre-set speeds, coatings can be applied with total consistency. A range of tables and adaptations can be selected. Vacuum, electromagnetic or heated tables, drying time recorders and gelatine devices are available.



Elcometer Leneta test charts

Elcometer supply a wide range of Leneta Test Charts, from plain white to those having different patterns of black and white. Produced from high quality, non-fluorescent paper, free of optical brighteners that may affect colour measurements, Leneta Test Charts are the market standard in today's coatings industry.

ENGLAND

Elcometer Instruments Ltd
Edge Lane
Manchester M43 6BU

Tel: +44 (0) 161 371 6000
Fax: +44 (0) 161 371 6010
e-mail: sales@elcometer.com
www.elcometer.com

USA

Elcometer Instruments Inc
1893 Rochester Industrial Drive
Rochester Hills Michigan 48309

Tel: +1 248 650 0500
Toll free: 800 521 0635
Fax: +1 248 650 0501
e-mail: inc@elcometer.com
www.elcometer.com

CANADA

Elcometer Canada Ltd
PO Box 622, 401 Ouelette Avenue
Windsor, Ontario N9A 6N4

Tel: +1 248 650 0500
Toll Free: 800 521 0635
Fax: +1 248 650 0501
e-mail: ca_info@elcometer.com
www.elcometer.com

ASIA & THE FAR EAST

Elcometer (Asia) Pte Ltd
896 Dunearn Rd
Sime Darby Centre #3-09
Singapore 589472,
Republic of Singapore

Tel: +65 6462 2822
Fax: +65 6462 2860
e-mail: asia@elcometer.com
www.elcometer.com

BELGIUM

Elcometer SPRL
Rue Vallée 13
B-4681 Hermalle /s Argenteau

Tel: +32 (0)4 379 96 10
Fax: +32 (0)4 374 06 03
e-mail: be_info@elcometer.be
www.elcometer.be

FRANCE

Elcometer SARL
BP 8-Bou
60 Rue de la Petite Levée
45430 Chécy

Tel: +33 (0)2 38 86 33 44
Fax: +33 (0)2 38 91 37 66
e-mail: fr_info@elcometer.fr
www.elcometer.fr

GERMANY

Elcometer Instruments GmbH
Himmlingstraße 18
D-73434 Aalen

Tel: +49 (0) 7366 91 92 83
Fax: +49 (0) 7366 91 92 86
e-mail: de_info@elcometer.de
www.elcometer.de