

HDT & VICAT FAMILY SOFTWARE



progress in testing

the NEW advanced Software VisualTHERM



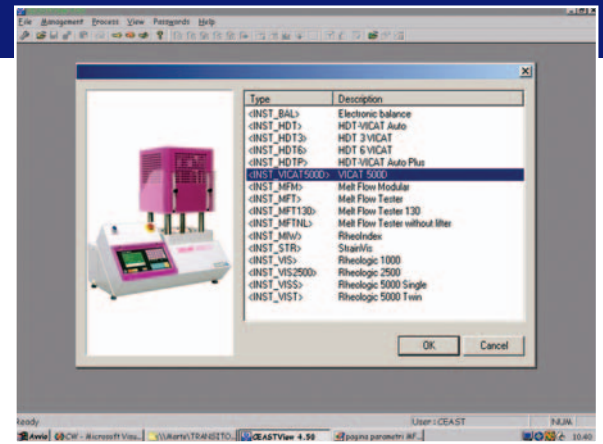


Fig. 1 Instrument Configuration

Working in the CeastVIEW platform, the VisualTHERM software has been specifically developed for CEAST HDT and Vicat instruments **Fig. 1** :

- HDT 3 Vicat - code 6911.000
- HDT 6 Vicat - code 6921.000
- HDT Vicat Auto - code 6970.000
- HDT Vicat Auto Plus - code 6971.000
- HDT Vicat 500 AIOxide - code 7310.000
- Vicat 500-D - code 7300.000 - 7302.000

VisualTHERM enables the user to perform the following operations and obtain the following results depending on which instrument the software has been configured for:

- Test management with data acquisition from apparatus
- Station Calibration
- Input data visualization with graphics
- Input data visualization with tables
- Saving and reloading of test data
- Set up, saving and reloading of test parameters **Fig. 2**
- Calculation and display of the combination of masses needed to apply the required stress on the specimens
- Presetting of end displacement (deflection or penetration, even at values different from the standardized ones, provided that they are not out of the transducer measuring range)
- Visualization of graph with overlay curves **Fig. 3**

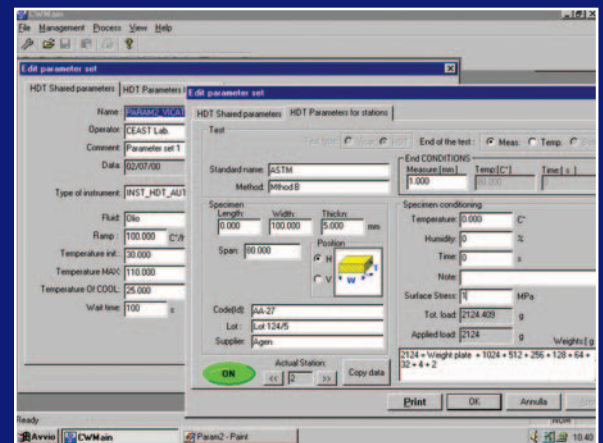


Fig. 2 Parameters Management

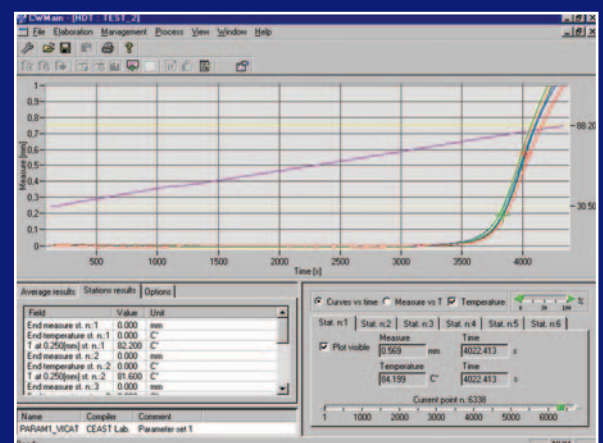


Fig. 3 Presentation of Results

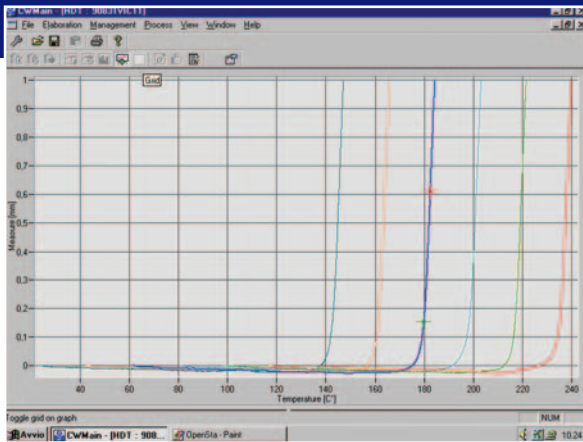


Fig. 4 Full Screen Graph

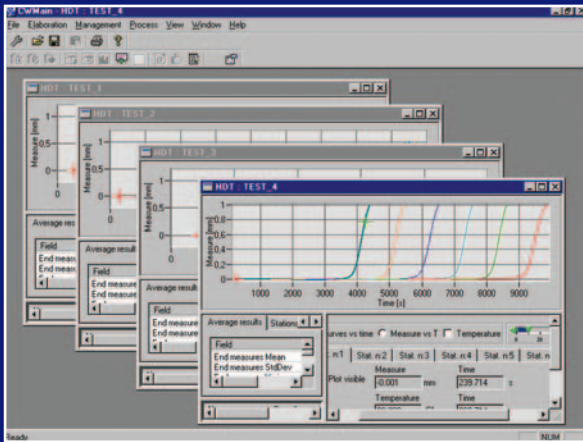


Fig. 5 Example of Multiple Display

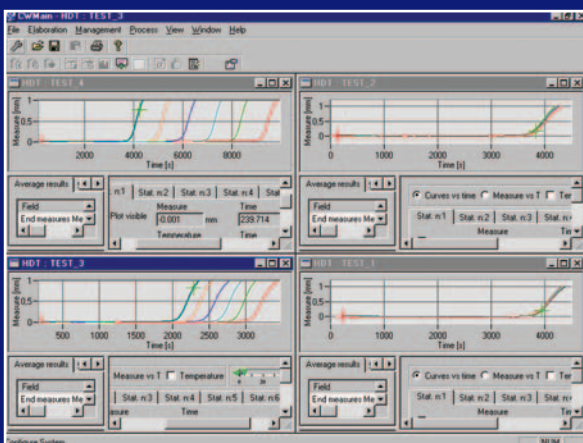


Fig. 6 Example of Multiple Display

- Visualization of graph with single curve: option to select the station displayed in the graph
- Full screen display mode **Fig. 4**, multiple display mode **Fig. 5, 6**
- Choice of the kind of graphics: Deflection or Penetration curves Vs Time or Temperature and Shifted curves
- Visualization of a table in which all data of each active station are displayed
- Visualization of general and statistical test data
- Visualization of data for single stations
- Output for Windows compatible graphic printer
- It is possible to change the logo shown on the test report.

Additional CEAST software modules:

OPERATOR Module - code 0710.501

Password-based operator access level management to assure data security and also to simplify the operating procedure for the non-expert operator. 3 levels available: Supervisor, Manager, Operator.

MULTI Module - code 0710.503.n

Concurrent management of n instruments at the same time for all enabled functions, including the complete handling of the process: parameters selection, test execution, real-time synoptic and data acquisition.

TRANSFER Module - code 0710.502

Possibility to manage and transfer data in Excel and Text files with customizable template formats.

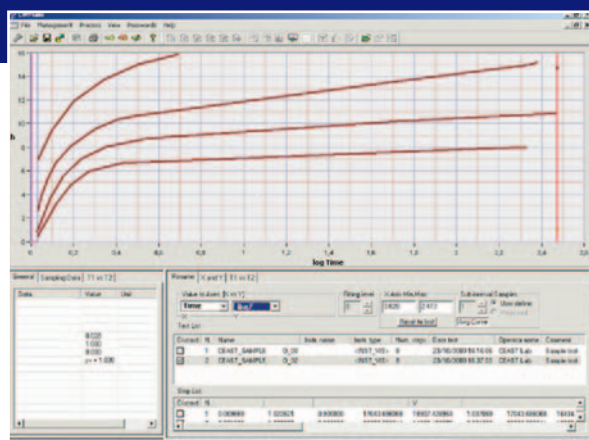


Fig. 7 Example of Main Creep Curves

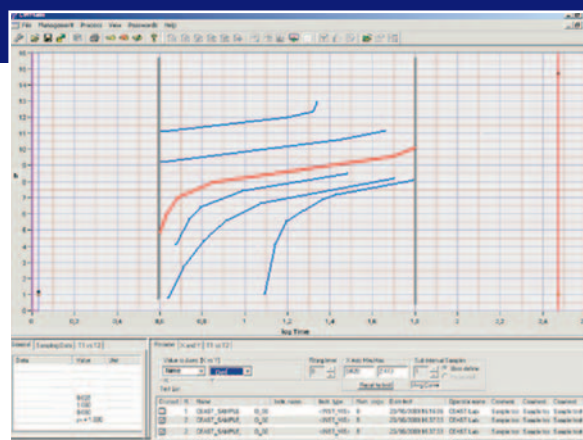


Fig. 8 Master Curve Analysis

CREEP Module - code 0710.443

CREEP test management to study flexural creep behaviour of materials at constant temperatures and with different loads. Main creep curves **Fig. 7**, elaboration for isochronous and isometric curves, master curve analysis management **Fig. 8**

ELASTIC MODULUS Module - code 0710.444

To measure Flexural Elastic Modulus at constant temperatures.

THERMAL DILATATION Module - code 0710.445

To investigate the thermal dilatation which the materials might show if kept in temperature.

"Due to the continuous development policy of CEAST's Research and Development Department, changes may be introduced without notice"

These instruments are made in compliance with CE health and safety requirements



CEAST S.p.A.

www.ceast.com

Via Airauda, 12 • 10044 Pianezza (TO) Italy • Tel: (+39) 011.966.40.38 (10 lines) • Fax: (+39) 011.966.29.02
e-mail: Int. Sales: Infoltaly@ceast.com • Int. after sales: aftersalestech@ceast.com

CEAST USA INC.

www.ceast.com

4816 Sirius Lane • Charlotte - NC 28208 • Tel: 704-423-0042 • Fax: 704-423-0081
e-mail: USA Sales: salesusa@ceast.com • USA Service: Keith@ceast.com

CEAST GmbH

www.ceast.com

Meylantstr. 89 B • D-44319 Dortmund • Germany • Tel: 0231 1389890 • Fax: 0231 1389891
e-mail: info.germany@ceast.com