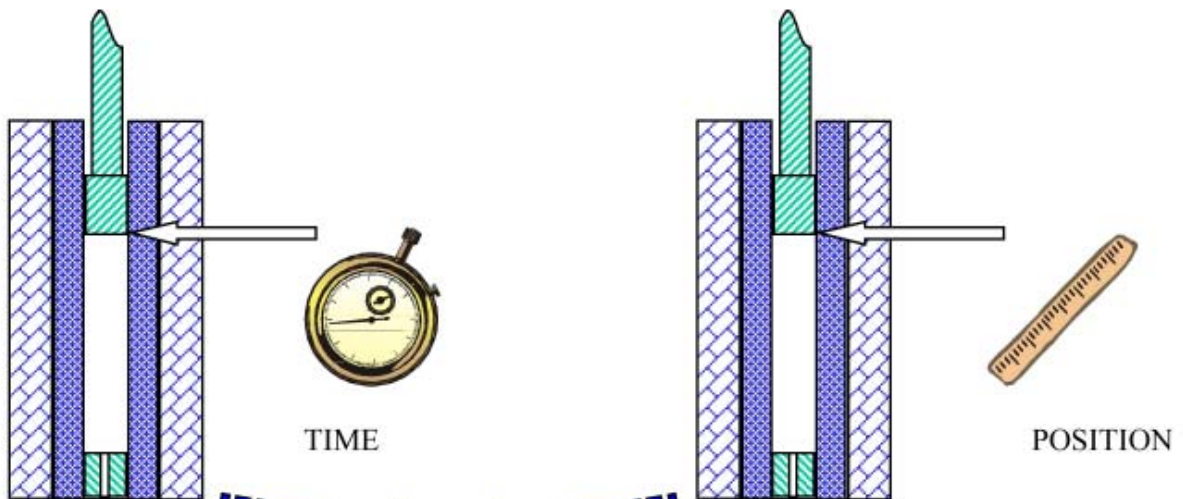


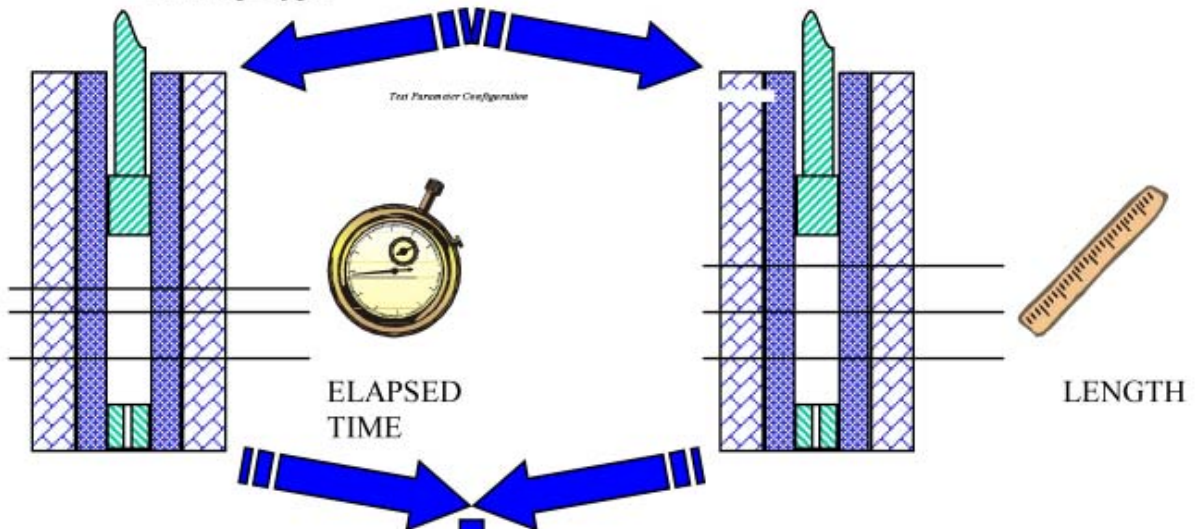


# Test Parameter Configuration

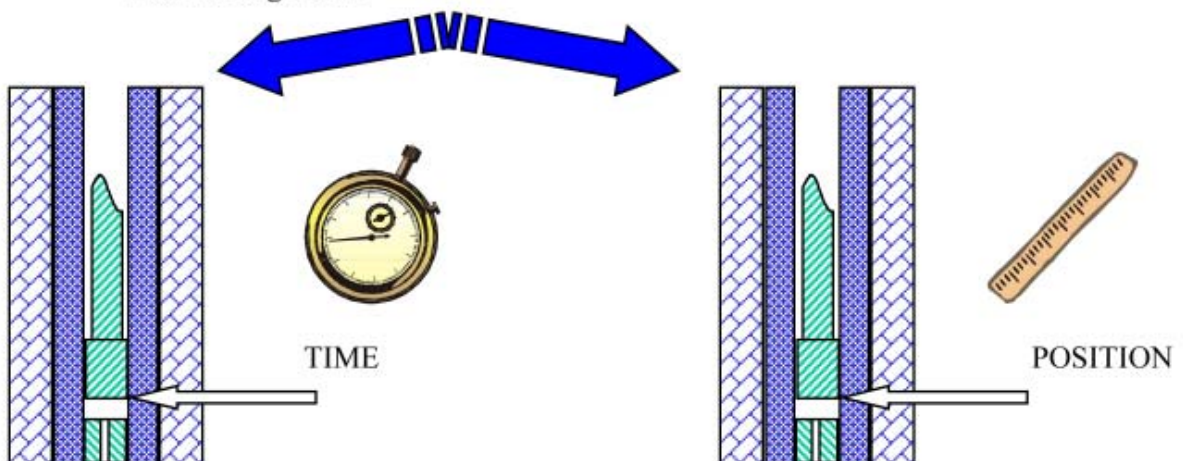
First Step: CHOOSE the Test Starting Point



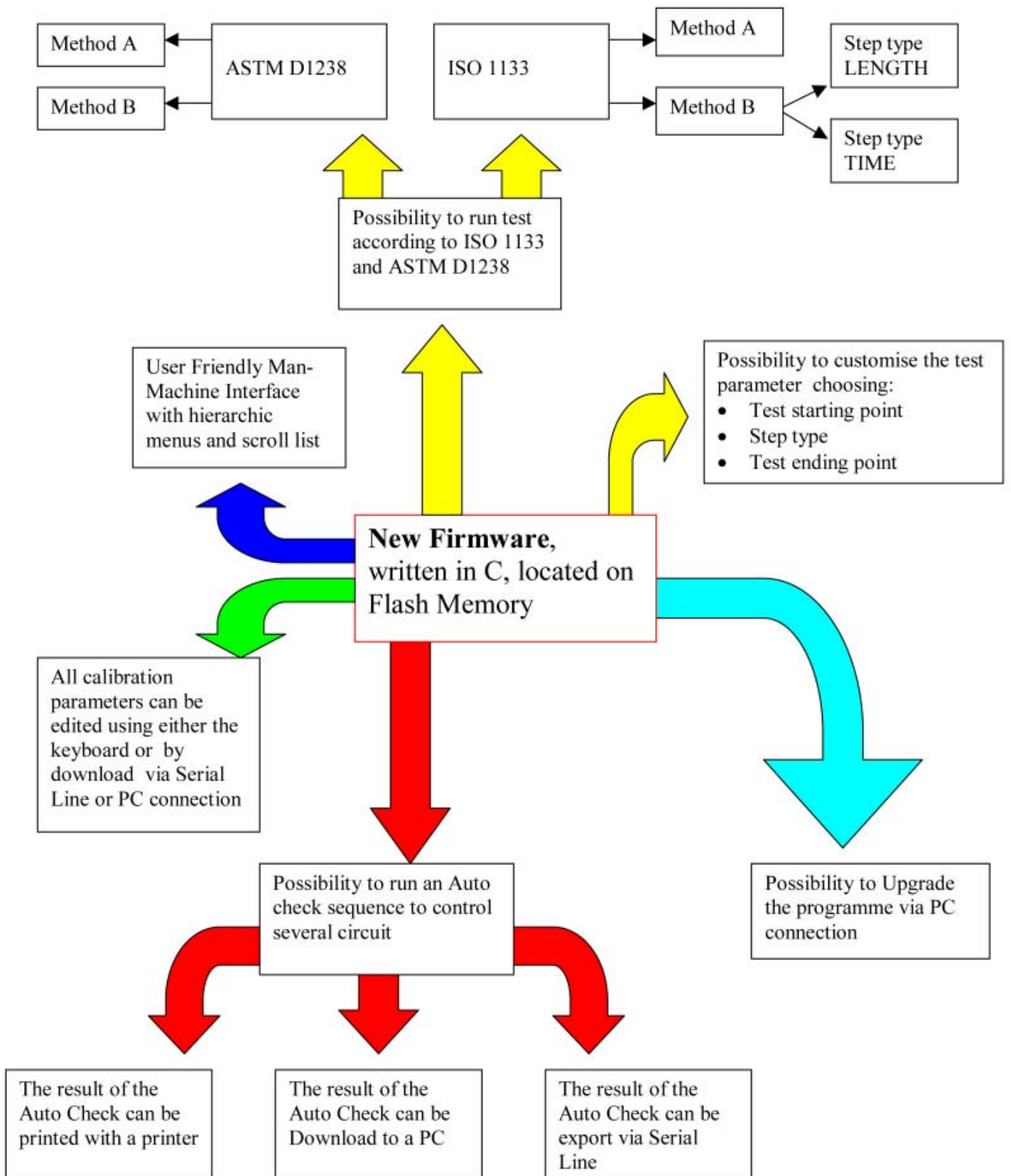
Second Step: CHOOSE the Step Type



Third Step: CHOOSE the Test Ending Point



# Firmware Flow Chart



## Modular Melt Flow description

The main novelty of the Modular Melt Flow is the new firmware program, completely written in C language, and its location in Flash Memory instead of eprom chips. This enables the possibility to upgrade the program via computer connection using a RS232 serial line. It is also possible to run, at any time, an Autocheck sequence in order to control several circuits. The result of the Autocheck can be:

- print, connecting the machine to a printer
- export via serial line
- download to a PC using the PC connection

All the calibration parameters are editable via keyboard or downloadable via serial line and via PC connection instead of the mechanical adjustment performed on the trimmer.

Possibility to memorize up to 25 sets of test parameters and up to 40 points can be acquired during the test with the possibility to reject, and restore if necessary, the values out of tolerance.

Inserting the test parameters is very simple and easy due to the hierarchic menus and scroll lists.

It is possible to run tests according to the ISO and ASTM standards. ISO method B describes the possibility to test in two different ways:

- Select the step length and measure the step time
- Select the step time and measure the step length

With this new firmware it is possible to do that; and choose the starting point of the test i.e:

- Piston position (describe by the standards)
- Elapsed time

This new feature is due to the new preheating phase that is divided into two step: a first step in which the weight is not applied on the material and the operator has to establish the duration (T1) and a second step in which the weight is applied on the material and the operator has to establish the duration only if the operator wants to select the test start time (T2); otherwise, instead of T2 the operator has to select the test start length (Qi).

Furthermore is possible to customisable the test parameter in accordance with the customers' needs. As previous mentioned is summarized in the following table:

Test Parameters												
Encoder	No				Yes							
Starting measure	T	T	P	P	T	T	T	T	P	P	P	P
Step	T	T	T	T	T	T	P	P	T	T	P	P
End measure	T	P	T	P	T	P	T	P	T	P	T	P

T = time; P = position

"Due to the continuous development policy of CEAST's Research and Development Department, changes may be introduced without notice"

 <a href="http://www.ceast.com">www.ceast.com</a>		<b>CEAST S.p.A.</b> <ul style="list-style-type: none"> <li>• Via Airauda, 12 • 10044 Pianezza (TO) Italy</li> <li>• Tel: (+39) 011.966.40.38 (10 lines) • Fax: (+39) 011.966.29.02</li> <li>E-MAIL: Int. Sales: <a href="mailto:Infoltaly@ceast.com">Infoltaly@ceast.com</a> - Int. after sales: <a href="mailto:aftersalestech@ceast.com">aftersalestech@ceast.com</a></li> </ul>
		<b>CEAST USA Inc.</b> <ul style="list-style-type: none"> <li>• 4816 Sirius Lane, Charlotte, NC 28208</li> <li>• Tel. 704-423-0042 • Fax 704-423-0081</li> <li>E-MAIL: USA Sales: <a href="mailto:salesusa@ceast.com">salesusa@ceast.com</a> - USA Service: <a href="mailto:Keith@ceast.com">Keith@ceast.com</a></li> </ul>
		<b>CEAST GmbH</b> <ul style="list-style-type: none"> <li>• Meylantstr. 89 B, D-44319 Dortmund</li> <li>• Tel. 0231 1389890 • Fax 0231 1389891</li> <li>E-MAIL: Sales and Service: <a href="mailto:info.germany@ceast.com">info.germany@ceast.com</a></li> </ul>