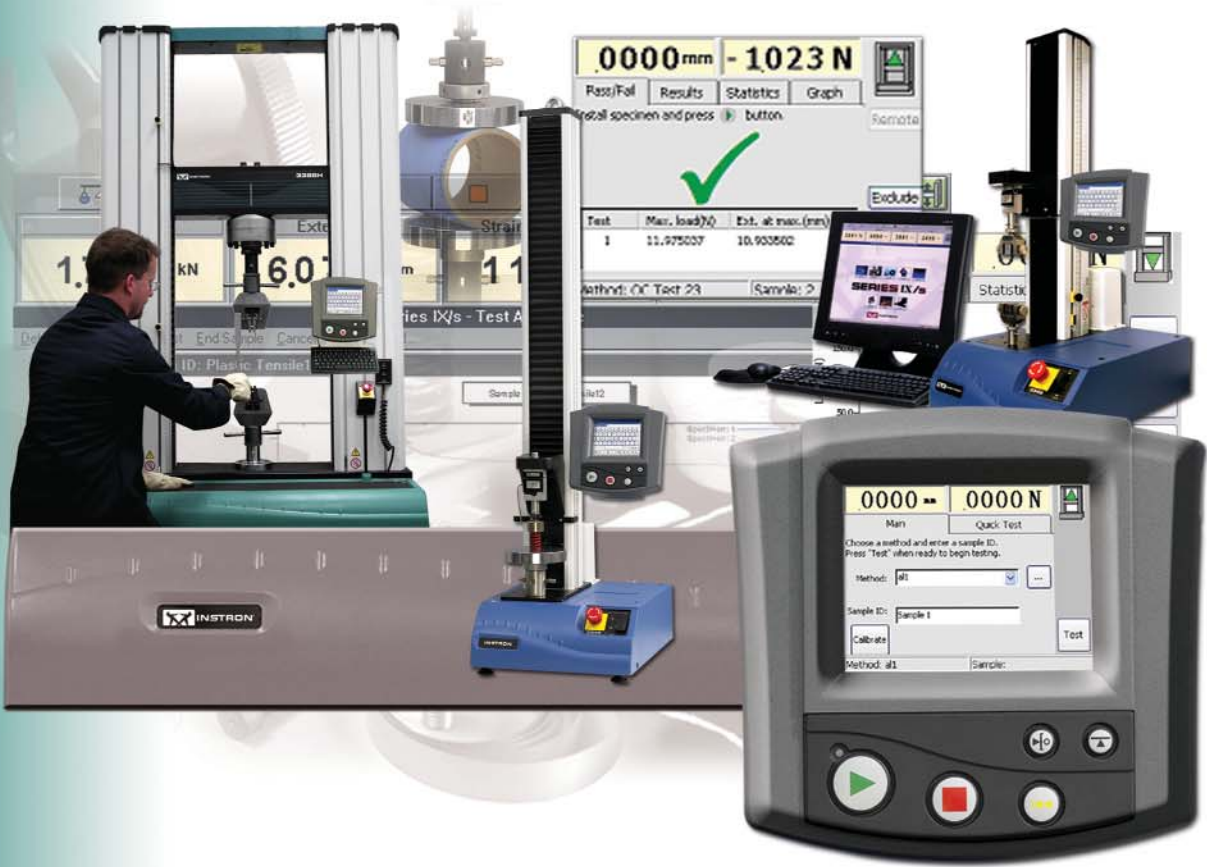


Instron® TouchPanel

For Simple, Fast, and Efficient Mechanical Testing



TouchPanel Screens are Simple to Learn and Use

The Instron® TouchPanel makes mechanical testing simple, fast, and efficient. It is primarily intended for quality control applications where throughput, productivity and ease-of-use are paramount, and where a computer might either be inappropriate for the environment, or simply too complicated for the application. Here are a few selected features of the TouchPanel:

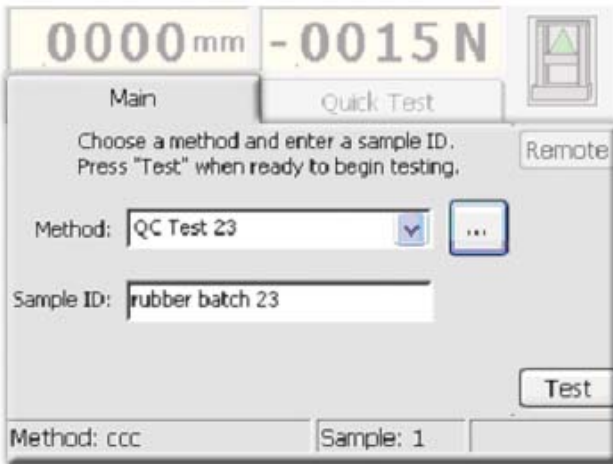
- Touchscreen eliminates PC, uses less lab space
- Simple screens are easy to learn and use
- Two control modes: 'Quick Test' and 'Methods'
- Four results modes: 'Pass/ Fail', 'Results Table', 'Statistics' and 'Graph'
- USB interface to save test results on memory stick and/ or printer
- For use on single column, table model, and floor model instruments



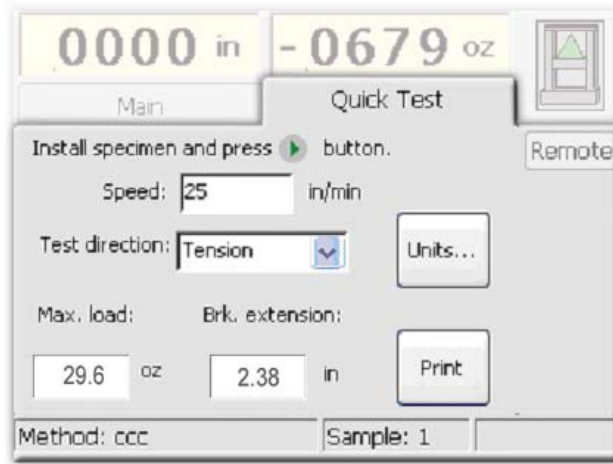
▲ The operator panel includes a software alpha-numeric keypad to enter sample ID, comments, and control parameters.



Select 'Method' or 'Quick Test'

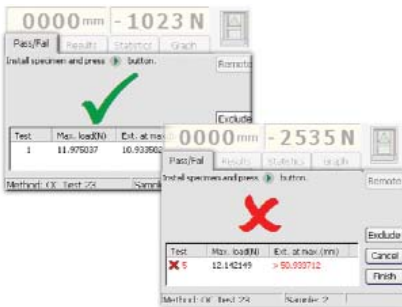


▲ The 'Method' mode allows you to select from any number of stored test methods using a simple drop-down menu.

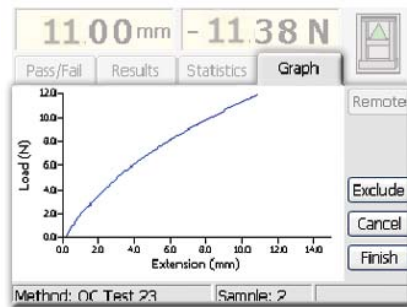


▲ The 'Quick Test' mode has everything you need on one single screen. Input speed, test direction, and press Start to run a quick test!

Choose Your Way to Display Results



▲ 'Pass/ Fail' is very visible and failed results are shown.

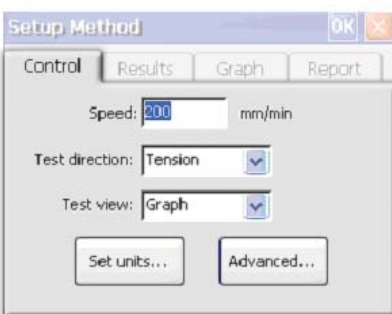


▲ 'Graph' displays a live output of selected parameters.

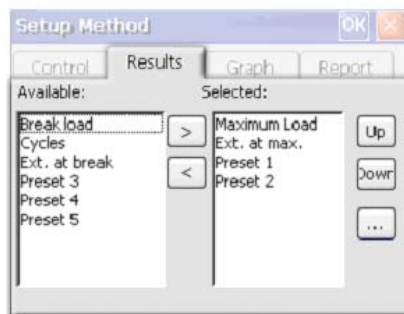
Test	Max. load(N)	Ext. at max.(mm)
1	11.98	10.93
2	11.98	10.93
3	11.76	10.93
4	11.86	11.27
5	12.14	> 50.93

▲ 'Results' table clearly shows each test, associated results and passed or failed test criteria.

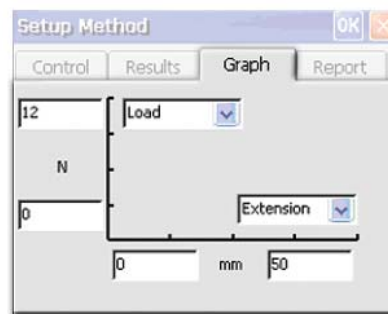
Setting up Methods is Simple and Fast



▲ This screen is for control parameters. 'Advanced' is to select end of test and cycling criteria.



▲ This screen is to set up results. The '[...]' button is for setting up the five preset points.



▲ This screen shows how one sets up the graph.



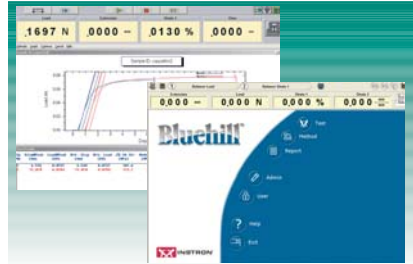
▲ The TouchPanel is available on single column, dual column/ table model, and floor model instruments (not including 5500 or 5800 series).



▲ Optional keyboard for those who prefer hard keys.



▲ Optional USB flash memory device: Allows you to transfer results or raw data files to a PC.



▲ For tests that go beyond the TouchPanel, comprehensive software solutions are available.

For information on Instron® products and services call your local worldwide sales, service and technical support offices:

Corporate Headquarters

Instron Corporation
100 Royall Street
Canton, MA 02021-1089 USA
Tel: +1 800 564 8378
+1 781 575 5000
Fax: +1 781 575 5751

European Headquarters

Instron Limited
Coronation Road
High Wycombe, Bucks
HP12 3SY United Kingdom
Tel: +44 1494 464646
Fax: +44 1494 456814

Industrial Products Group

900 Liberty Street
Grove City, PA 16127-9005 USA
Tel: +1 800 726 8378
+1 724 458 9610
Fax: +1 724 458 9614

IST GmbH

Landwehrstrasse 65
Darmstadt, D-64293 Germany
Tel: +49 6151 3917-0
Fax: +49 6151 3917-500

USA

North America IMT Sales and Service Center

Sales Tel: +1 800 564 8378
Service and Technical Support Tel: +1 800 473 7838

North America IST Sales and Service Center

Sales and Service Tel: +1 248 553 4630

CANADA

Toronto Tel: +1 905 333 9123
+1 800 461 9123

SOUTH AMERICA, CENTRAL AMERICA, MEXICO AND CARIBBEAN

Brazil
Sao Paulo Tel: +55 11 4195 8160

Caribbean, Mexico, South America and Central America

Canton Tel: +1 781 821 2770

EUROPE

United Kingdom, Ireland, Sweden, Norway and Finland

High Wycombe Tel: +44 1494 456815

Benelux and Denmark

Edegem Tel: +32 3 454 0304

France

Paris Tel: +33 1 39 30 66 30

Germany and Austria

Darmstadt Tel: +49 6151 3917 444

Italy

Milan Tel: +39 02 390 9101

Spain and Portugal

Barcelona Tel: +34 93 594 7560

ASIA

China

Beijing Tel: +86 10 6849 8102

Shanghai Tel: +86 21 6215 8568

India

Chennai Tel: +91 44 2 829 3888

Japan

Tokyo Tel: +81 44 853 8520

Osaka Tel: +81 6 6380 0306

Nagoya Tel: +81 52 201 4541

Korea

Seoul Tel: +82 2 552 2311/5

Singapore Tel: +65 6774 3188

Taiwan

Hsinchu Tel: +886 35 722 155/6

Thailand

Bangkok Tel: +66 2 513 8751/52

AUSTRALIA

Melbourne Tel: +61 3 9720 3477



Instron is a registered trademark of Instron Corporation.
Other names, logos, icons and marks identifying Instron products and services referenced herein are trademarks of Instron Corporation and may not be used without the prior written permission of Instron.
Other product and company names listed are trademarks or trade names of their respective companies.
Copyright © 2005 Instron Corporation. All rights reserved.
All of the specifications shown in this brochure are subject to change without notice.

www.instron.com

WB1217